

**BTRDA Clubmans
Rallycross Championship
presented by Cooper
Tires**

**Drivers Briefing
(Inc. New Drivers Briefing)**

**Round 1 - Saturday 12th
September 2020**

Lydden Hill

**Josh Bennett
Clerk of the Course**



Welcome

- On behalf of Lydden Hill Motorsport Club, Lydden Hill Race Circuit and the BTRDA I would like to welcome you to the somewhat delayed opening round of this years BTRDA Clubmans Rallycross Championship presented by Cooper Tires.
- I would also like to thank you for your entry in to this event and hope you have a safe and enjoyable day racing here.
- You have three Clerks of the Course at this event, we are contactable via race administration, please do not visit race control unless invited (due to Covid-19)
 - Josh Bennett
 - Tony Richardson
 - Barry Morris

Covid-19


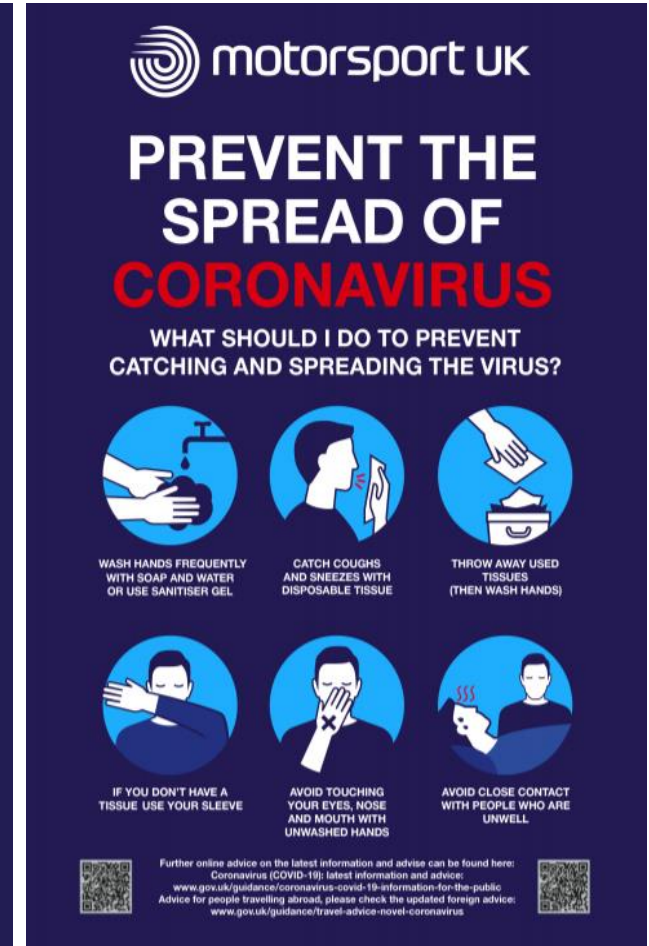
- The coronavirus pandemic has had an impact on all our lives and we must do all we can to minimise the risk of infection while participating in motorsport.
- We would ask;
 - Please do not go to the medical centre unless absolutely necessary, please bring a first aid kit for minor ailments.
 - If asked to visit race control, please knock on the door and wait, no competitors are to enter the race control room at any time.
 - Transponders must be hired in advance from the TSL website – Follow TSL instructions regarding transponder collection.
 - Please only visit race administration if necessary.
 - **Please give a thumbs up to the marshals in the event of an incident and then make your way to a point of safety.**



motorsport UK

IN THE EVENT OF AN ACCIDENT


Let the marshals know you are OK

motorsport UK

PREVENT THE SPREAD OF CORONAVIRUS

WHAT SHOULD I DO TO PREVENT CATCHING AND SPREADING THE VIRUS?



WASH HANDS FREQUENTLY WITH SOAP AND WATER OR USE SANITISER GEL

CATCH COUGHS AND SNEEZES WITH DISPOSABLE TISSUE

THROW AWAY USED TISSUES (THEN WASH HANDS)

IF YOU DON'T HAVE A TISSUE USE YOUR SLEEVE

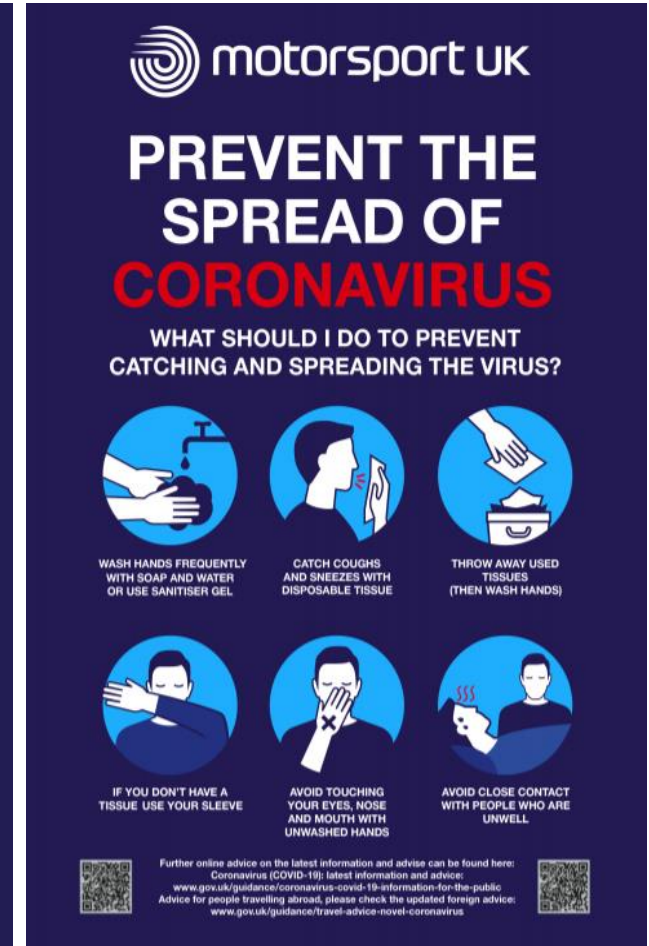
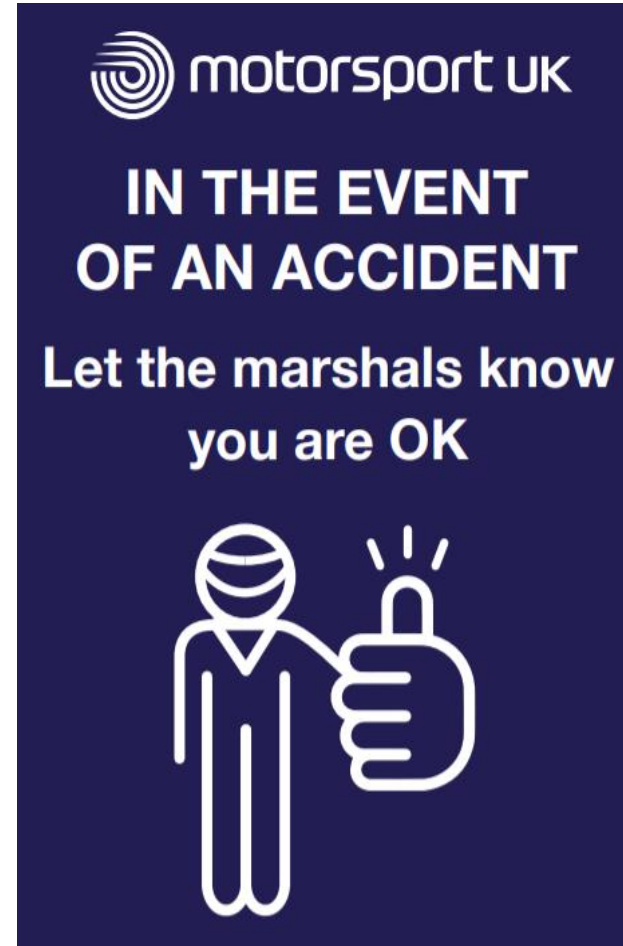
AVOID TOUCHING YOUR EYES, NOSE AND MOUTH WITH UNWASHED HANDS

AVOID CLOSE CONTACT WITH PEOPLE WHO ARE UNWELL

Further online advice on the latest information and advice can be found here:
 Coronavirus (COVID-19): latest information and advice:
www.gov.uk/guidance/coronavirus-covid-19-information-for-the-public
 Advice for people travelling abroad, please check the updated foreign advice:
www.gov.uk/guidance/travel-advice-novel-coronavirus

Covid-19

- To comply with Motorsport UK guidance, the paddock will operate as a “bubble” no spectators will be allowed in this area. This includes friends or family if they attend on spectator tickets. Only those with competitor/team/official passes will be granted access to the Paddock.
- Likewise competitors and teams will only be able to spectate from specific viewing areas adjacent to the Paddock which will be put in place by the circuit in advance of the event.
- Circuit staff are fully empowered to enforce these regulations and may report non-compliance to the Clerk of the Course.

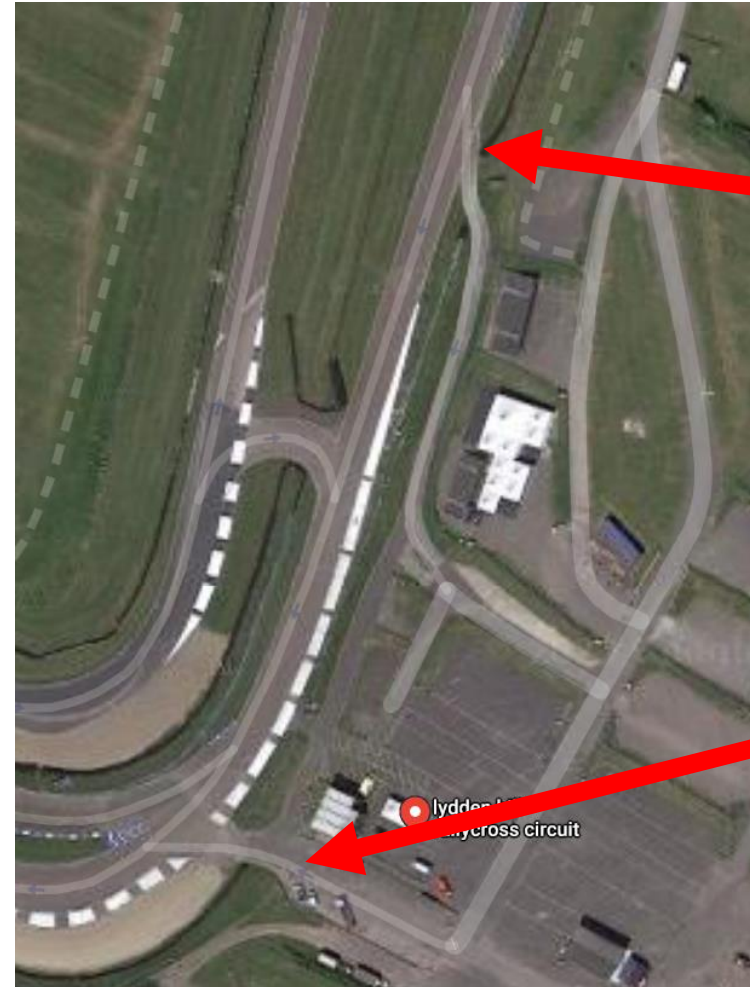


Judicial Procedures

- Due to COVID-19, there have been changes to the way in which we will do things. The judicial hearings will take place in the same way as before, however social distancing will be maintained throughout and face masks or coverings must be worn throughout.
- The Clerks decision will be announced verbally and then the judicial form will be uploaded to the virtual noticeboard and emailed to competitors concerned. The thirty minutes in which to make an appeal starts from the time the email was sent to the competitor. The virtual noticeboard can be accessed by visiting www.lyddenhill.co.uk/lhmc
- If you wish to make a protest or appeal, you must do this electronically using the Motorsport UK form which can be found at this link – <https://www.motorsportuk.org/wp-content/uploads/2020/07/2020-07-08-protest-and-appeal-form-1.pdf>
- Judicial Fines – If a Clerk feels it appropriate to impose a fine, this must be paid to Motorsport UK the week after the event. No fines will be collected at the circuit.

Circuit Access/Egress

- Circuit access is via the Assembly Area, the marshals will indicate when it is your time to go on circuit.
- Circuit egress, once your session has finished, you will complete a lap of the circuit and exit via the slip road at marshals post 8.
- Once you have passed the chequered flag, please use the race circuit to return to the paddock – Not the rallycross track.

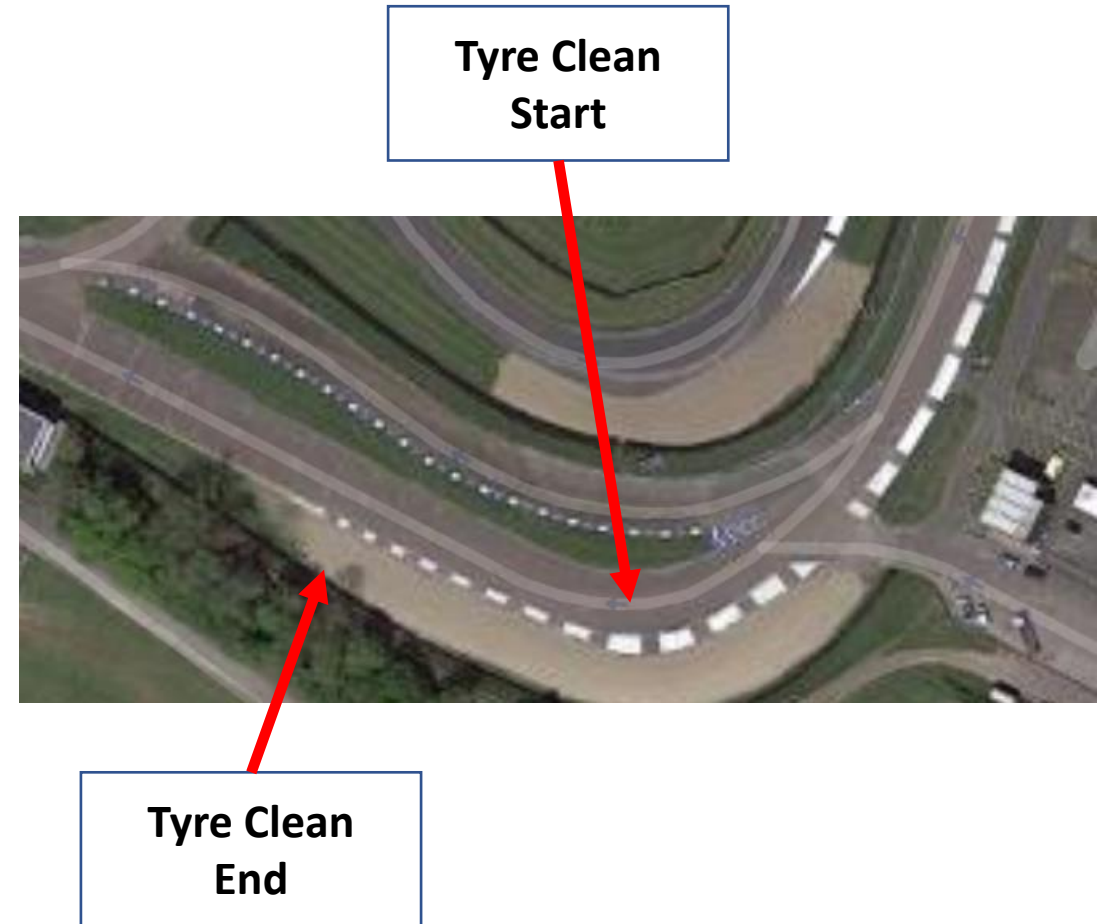


Circuit Egress

Circuit Access

Tyre Cleaning

- Tyre cleaning is permitted as far as the marker cone at the side of the circuit adjacent to marshals post 10 as shown on the map opposite.
- Any one tyre cleaning beyond this point will be subject to penalty for unsafe approach to the grid.



Race Starts

- For all race starts you will be directed onto the circuit via the route used in practice and form up on the grid.
- The lighting system is as used in the World & British RX Championships. Once the grid has been set the light panel will display a “Ready to Race” sign. This is the signal that the grid is set and the start lights are imminent. The race will commence once the Green Lights are displayed.
- A false start will be detected by the starting system and will be indicated by flashing red lights on the light gantry. If you miss your race you will not be allocated to another so please make sure you are on time for your heats and final.
- In the event of a failure of the start lights, the starter will revert to the National Flag, drivers will be advised should this happen before their race.
- As we are using the Joker lap this weekend, a jump start will incur a 2 x Joker Lap penalty. A further jump start may result in disqualification for the competitor concerned.

Track Limits

- Any competitor who leaves the circuit such that all four wheels are off the course may incur a time penalty or may be considered as having retired from the heat or final at the point at which they left the course whether or not an advantage is gained. Likewise competitors should remain within the white lines defining the edges of the circuit and failure to do so may render the competitor liable to penalties, which may include time penalties or possible disqualification.
- Track limits are monitored at the exit of Devils Elbow going up the hill on drivers right and on the approach to Paddock Bend on the drivers left.
- During all sessions, any competitor reported as having breached track limits will be dealt with as follows;
 - 1st Offence – The competitor's offence will be issues on the result sheet as their official warning and the next offence will attract a penalty
 - 2nd Offence – The competitor will be given a 5 second penalty for that race
 - 3rd Offence – The competitor will be given a 10 second penalty for that race
 - 4th Offence – The competitor will be disqualified from that race

Paddock Regulations

- Refuelling – All refuelling must be done in the refuelling area near the trailer park. Please do not fuel with a hot car, but ensure you are fuelled in time for your race. Also ensure you have enough fuel to rerun your race should this be required.
- We will not have people running around the paddock to find competitors for their races. Keep up to speed with the programme and listen to the tannoy.
- In order to help with social distancing we ask that there is only once team member in the Assembly Area. The marshals are empowered to ask additional crew to leave the area and will report non-compliance to the Clerk of the Course.
- There is a 10mph speed limit in the paddock area.
- The circuit perimeter roads cannot be used for testing cars.

General

- Driving Standards will be monitored for the duration of the event, on track incidents will be investigated and action may be taken if necessary.
- If you have been involved in an incident and would like to speak to a Clerk about it, please speak with Race Administration in the first instance, they will arrange for you to visit Race Control if necessary. Upon arrival please wait outside and someone will come to you.
- **Motorsport is a non-contact sport.**
- A reminder all competitors must practice to be eligible to compete in the event.

BTRDA Points

- The BTRDA officials have asked us to remind you of a few points ahead of the event;
 - All championship decals must be in place before the start of practice. BTRDA officials will monitor and may prevent cars with incorrect decals from going on circuit.
 - This event is being televised (with the finals potentially going out on a live stream) therefore, please ensure your cars are kept as clean as possible at all times.
 - A reminder that Frontal Head Restraints (FHR's) are compulsory.
 - All cars must carry a front facing camera which must be recording at all times whilst on circuit. Footage must be delivered to the Clerk of the Course upon request. Non-compliance will result in disqualification from the race concerned.



The LHMC Winter Rallycross Series

- After the success of the 2019/20 Winter Rallycross Series, we will be doing it again for the 2020/21 winter season
- Our first event is provisionally the 5th December with further dates to be announced in due course
- Please visit www.lyddenhill.co.uk for more information